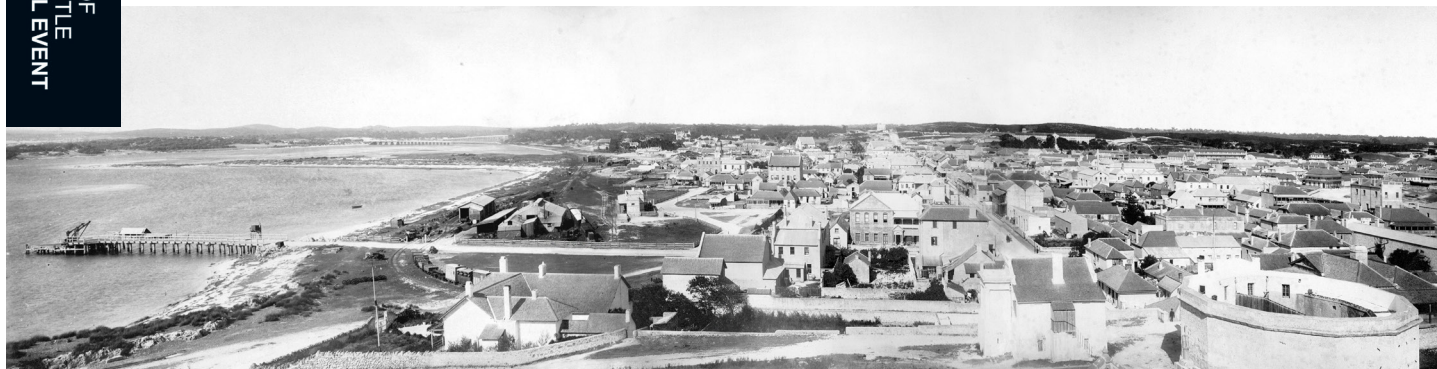


# Historical Panoramas



Panorama captured by unknown photographer from the Arthur Head Lighthouse, 1890 © State Library of Western Australia



Panorama captured by Joel Newman, Andrew Woods and Marcia Schneider from a drone positioned at the same site, 2016 © Curtin University HIVE

**Saturday 28 May 2016**

**11am – 12:30pm**

**WA Maritime Museum  
Victoria Quay, Fremantle**

Join us in the NWS Shipping Theatre during the Maritime Museum Open Day for an astonishing visual presentation. Through cutting edge technology navigate the remarkable changes to the Perth and Fremantle landscape from 1890 – 2016.

Curtin University HIVE (Hub for Immersive Visualisation and eResearch) in partnership with the State Library of Western Australia has created interactive software that will fully immerse you in a wide selection of breathtaking historical panoramas.

This free event is presented in conjunction with the Western Australian Museum.  
Entry to Museum by gold coin donation.

**Places are limited. Call 1300 134 081  
or email [reception@museum.wa.gov.au](mailto:reception@museum.wa.gov.au) to secure your spot.**