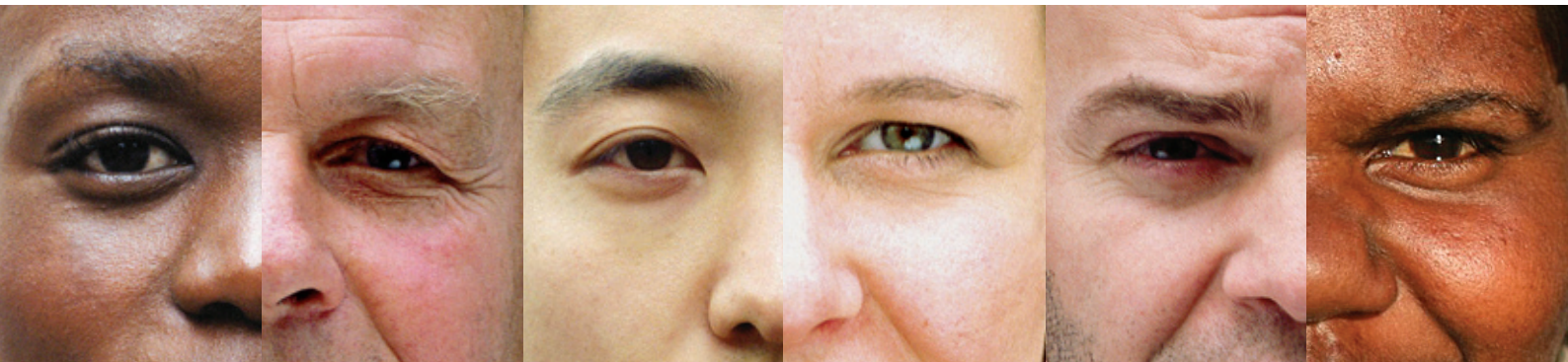




MELBOURNE
SOCIAL EQUITY
INSTITUTE



Melbourne Social Equity Institute
INAUGURAL CONFERENCE

IMAGINING SOCIAL EQUITY

28 February – 1 March, 2014

MELBOURNE VICTORIA AUSTRALIA
Melbourne Cricket Ground (MCG)

ANNOUNCEMENT & CALL FOR ABSTRACTS

Closing date for abstracts:

Friday 27 September 2013

CONFERENCE WEBSITE:

<http://socialequity2014.conorg.com.au>

“Social Equity” sounds like an important and worthwhile concept, but it can mean very different things to different people. The concept has policy and financial aspects to it, but it can be used more broadly – for example, there are often calls for equity in education, health and urban and regional planning. The concept encompasses policies and practices that go beyond simply treating people equally. Treating people in an equitable way requires taking into account their individual needs, rather than treating them in exactly the same way.

While social equity as a concept may be difficult to pin down, it provides a starting point for researchers from different disciplines to examine what they perceive as unjust or unfair social practices and to come up with options to redress them. This inaugural conference offers policymakers, non-governmental organisations and researchers from different disciplines the opportunity to work together to explore what social equity means and to investigate ways of ameliorating disadvantage.

The conference will be accompanied by events open to the public aimed at engaging debate on social equity issues. Details will be included in the conference brochure and advertised on the conference website.

Convenor:

Professor Bernadette McSherry
Foundation Director, Melbourne Social Equity Institute

Conference Committee:

Professor Sean Cooney
Associate Director (Taiwan), Asian Law Centre, Melbourne Law School, University of Melbourne

Dr John Furler
Research Fellow, General Practice and Primary Health Care Academic Centre, University of Melbourne

Associate Professor Louise Harms
Deputy Head, Social Work, University of Melbourne

Professor Julie McLeod
Australian Research Council Future Fellow, McCaughey VicHealth Centre for Community Wellbeing, Melbourne School of Population Health, University of Melbourne

Dr Deborah Warr
Australian Research Council Future Fellow, McCaughey VicHealth Centre for Community Wellbeing, Melbourne School of Population Health, University of Melbourne



Yarra River, Melbourne



CONFERENCE VENUE

Melbourne Cricket Ground (MCG)

Wembley Stadium, Camp Nou, Yankee Stadium and Madison Square Garden are considered among the greatest sporting arenas in the world, but for history, pure drama and emotion, it's hard to look past the MCG.

The MCG was built in 1853. Known colloquially as the 'G', Australia's favourite stadium is the birthplace of Test cricket and the home of Australian football, holding more than 80 events annually and attracting close to four million people. It has hosted more than 100 Test matches (including the first in 1877) and VFL/AFL Grand Finals.

Accommodation will be available at two nearby hotels.

HOST CITY

Melbourne Australia

Melbourne is one of the great multicultural cities of the world. For the Wurundjeri, Boonerwung, Taungurong, Djajawurrung and the Wathaurung Indigenous people who make up the Kulin Nation, Melbourne has always been an important meeting place. Around 140 cultures are represented in Melbourne's current population, from Victoria's original Indigenous inhabitants to more recent migrants from Asia and Africa. Melbourne has gained a reputation as the "cultural and sporting capital" of Australia, with a focus on performing arts, culinary arts and visual arts as well as sport and recreation. Melbourne is also a major centre of political activism, with Melbourne Trades Hall being viewed as the birthplace of the Australian trade union movement.

For more information about Melbourne, check the following:
www.melbourne.citysearch.com.au
www.melbourne.vic.gov.au
www.visitvictoria.com.au

KEYNOTE SPEAKERS



Professor Kerry Arabena

Kerry Arabena is Professor of Indigenous Health and the Director, Onemda VicHealth Koori Health Unit, at the University of Melbourne. She was the Professor and Director of Indigenous Health Research in the School for Indigenous Health, Monash University. A descendant of the Meriam people of the Torres Strait, and a former social worker with a doctorate in human ecology, Professor Arabena has an extensive background in public health, administration, community development and research and has worked in senior roles in indigenous policy and sexual health. Her work has been in areas such as gender issues, social justice, human rights, access and equity, service provision, harm minimisation, and citizenship rights and responsibilities. She was a founding Co-Chair of the new national Indigenous peak body, the National Congress of Australia's First Peoples, a collective voice to lobby governments on Indigenous issues.



Professor Claudio Grossman

Claudio Grossman is Professor of Law and Dean of American University Washington College of Law and the Raymond Geraldson Scholar for International and Humanitarian Law. He is chair of the United Nations Committee against Torture, where he has served as a committee member since 2003. Previously, Professor Grossman served as a member of the Inter-American Commission on Human Rights (1993-2001), its president (1996-97, and 2001), its special rapporteur on the rights of indigenous populations (2000-2001), and its first special rapporteur on women's rights (1996-2000). Professor Grossman has authored books and articles on international law, human rights, and the law of international organizations. He has received numerous awards for his contributions to these fields, including the Henry W. Edgerton Civil Liberties Award from the American Civil Liberties Union of the National Capital Area recognizing his lifetime of work defending and advancing civil liberties.



Professor Kathleen Lynch

Kathleen Lynch is Professor of Equality Studies at University College Dublin, where she also holds a Senior Lectureship in Education. She is Head of the UCD School of Social Justice. Her major area of equality research has been in education, but for the last 10 years she has also been working on issues of egalitarian theory and practice with colleagues in Equality Studies. She has been a major author of two significant works in the field: *Equality: From Theory to Action* (2004, 2009) and *Affective Equality: Love Care and Injustice* (2009). The latter was listed as one of Ireland's 100 best books in 2009 by the Irish Times. She has published extensively in academic journals.



Professor Dame Sally Macintyre

Dame Sally Macintyre is Director of the Institute of Health and Wellbeing, University of Glasgow; and Director of the Medical Research Council and Chief Scientist Officer's Social and Public Health Sciences Unit, University of Glasgow. A medical sociologist, she has researched socioeconomic and spatial inequalities in health across time and over the life course, using data from individuals, households and areas to improve understanding of the significance of the social and physical environment for health. Current interests include perceptions of risk; the understandings and use of public health research by the public, policymakers, practitioners, and the press; and developing an evidence-base for health improvement and reducing health inequalities.

The Melbourne Social Equity Institute

The MSEI supports interdisciplinary research on social equity issues across the full spectrum of social life including health, law, education, housing, work and transport. The Institute brings together researchers from across the University of Melbourne, in collaboration with external bodies, to identify unjust or unfair practices that lead to social inequity and work towards finding ways to ameliorate disadvantage.

The MSEI was established in mid-2012 and is the newest of the University's interdisciplinary research institutes. The Institute supports interdisciplinary research, facilitates researchers working with government and community organisations and helps with the dissemination and translation of research for public benefit.

INVITATION TO ATTEND

If you wish to be included in the mailing list to receive the advance program and registration brochure, please email us at: info@conorg.com.au (with "Social Equity" in the subject line and your postal address in the body of the email), or complete the following and return to:

The Conference Organiser
146 Leicester Street
Carlton, Victoria 3053,
AUSTRALIA

Name:

Address:

Post Code:

Email:

FIRST & FINAL CALL FOR ABSTRACTS

Closing date for receipt of Abstracts:

Friday 27 September, 2013

Proposals are invited for the following:

- **Papers** (30 minutes including 10 minutes for questions/discussion)
- **Papers** (20 minutes including 5 minutes for questions/discussion)
- **Symposia** (90 minutes including 3 or 4 related papers)

The Melbourne Social Equity Institute encourages papers that deal with the following themes:

- **Citizenship and Diversity**
- **Access to Public Goods**
- **Human Rights**
- **Social Policy Across the Life Course**

For further information on these themes, please see:

www.socialequity.unimelb.edu.au

Please note:

Presentation of accepted abstracts is contingent on registration for the conference; persons whose abstracts are accepted will be required to register at least 6 weeks prior to the conference in order for their presentation to appear on the final program.

The template for abstracts can be downloaded from the conference website:

<http://socialequity2014.conorg.com.au>

Please forward abstracts, using the template, by email to:

info@conorg.com.au

Confirmation of receipt of abstracts will be emailed within 48 hours; if you do not receive this confirmation, please contact us.



INFORMATION

For further details regarding the conference and accommodation options, please see the conference website:
<http://socialequity2014.conorg.com.au>

or contact:

The Conference Organiser
146 Leicester Street
Carlton, Victoria 3053 AUSTRALIA

Phone: Australia: (03) 9349 2220
International: +61 3 9349 2220

Email: info@conorg.com.au

Fax: Australia: (03) 9349 2230
International: +61 3 9349 2230

For general enquiries about the Melbourne Social Equity Institute, please contact Charlene Edwards, Executive Officer.

Phone: +61 3 9035 4738

Email: Charlene.Edwards@unimelb.edu.au

<http://www.socialequity.unimelb.edu.au>

DISCLAIMER:

At the time of printing, all information contained in this brochure is correct. However, the organising committee, its sponsors and its agents cannot be held responsible for any changes to the final structure or content of the programs, or any other general or specific information published in this brochure.